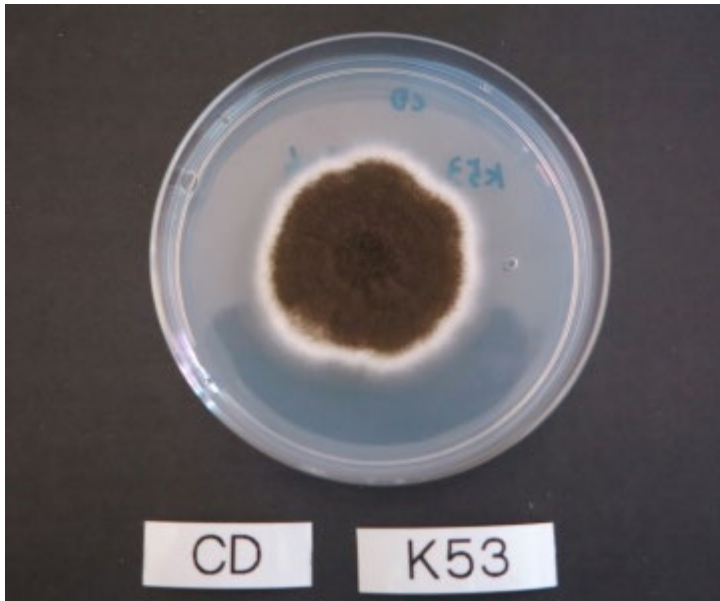
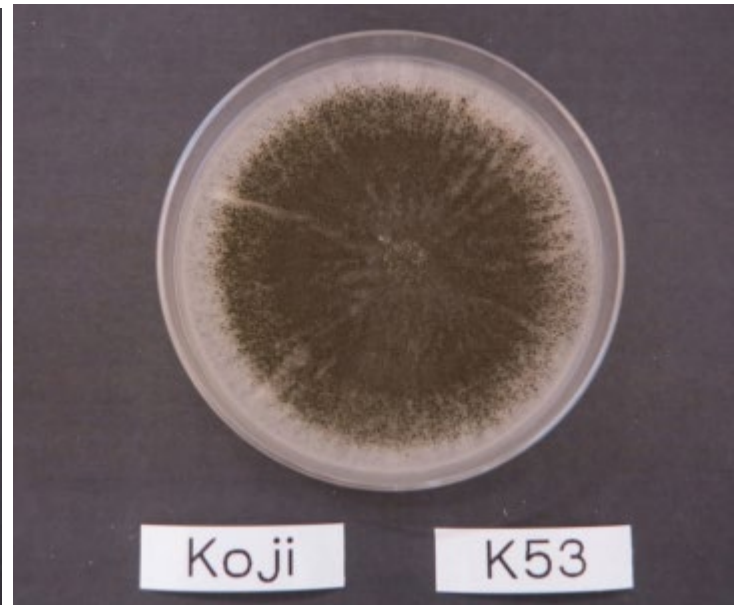


# K53

## *Aspergillus luchuensis*



Colony on CD plate



Colony on koji extract plate

### Mycological characters

Color of old slant culture	Diameter (mm) of colony at 34 C	Reverse side of Colony		Sclerotia
		Wrinkling	Color	
Roughness of stalk	Length of stalk (mm)	Diameter of vesicles (μ)	Roughness of conidia	Diameter of conidia (μ)
Ratio of biseriata sterigmata (%)	Production			
	Kojic acid	Pigments	Aflatoxins	Amylase
Coloration of hydroquinone	Reduction of methylene blue	Browning of rice koji	Pink color of conidia in meidum with	
			Anisic acid	Anisaldehyde
Note	A. saitoi, Sugama et. al, J. Soc. Brew. Japan, 70, 595 (1975) A. luchuensis (Yamada et. al, JBB, 112, 233 (2011))			