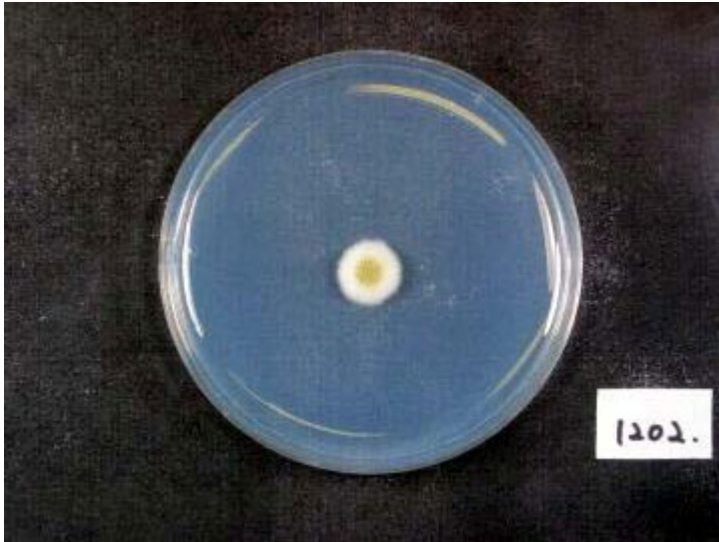
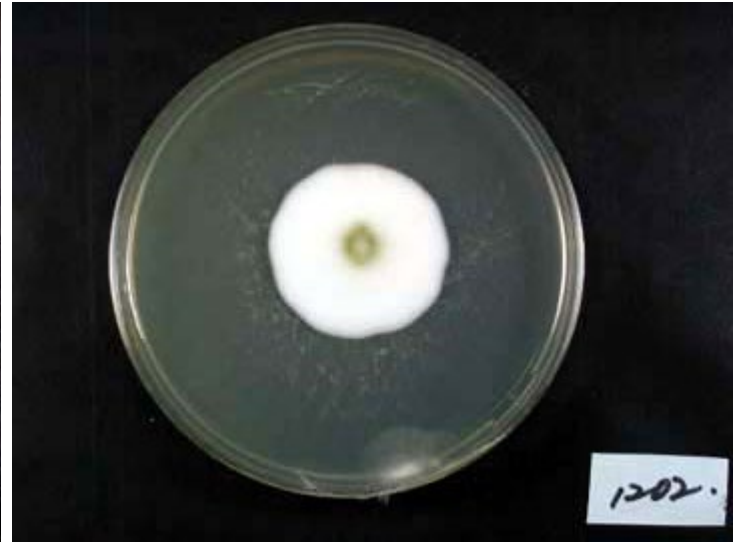


# RIB1202

*A. sojae* Sakaguchi et Yamada



Colony on CD plate



Colony on koji extract plate

## Mycological characters

Color of old slant culture	Diameter (mm) of colony at 34 C	Reverse side of Colony		Sclerotia
		Wrinkling	Color	
1	4	3	4	1
Roughness of stalk	Length of stalk (mm)	Diameter of vesicles (μ)	Roughness of conidia	Diameter of conidia (μ)
1	1	1	6	4
Ratio of biseriata sterigmata (%)	Production			
	Kojic acid	Pigments	Aflatoxins	Amylase
1	3	3	1	3
Coloration of hydroquinone	Reduction of methylene blue	Browning of rice koji	Pink color of conidia in meidum with	
			Anisic acid	Anisaldehyde
2	2	2	3	2
Note	IAM 2731 (1969) A, oryzae S, et Y. -ACTU, Takahashi O ITS type A1a, AFHC type A. oryzae group1 (Tominaga et. al, AEM, 72, 484 (2006), Kiyota et. al, JBB, 111, 512 (2011))			