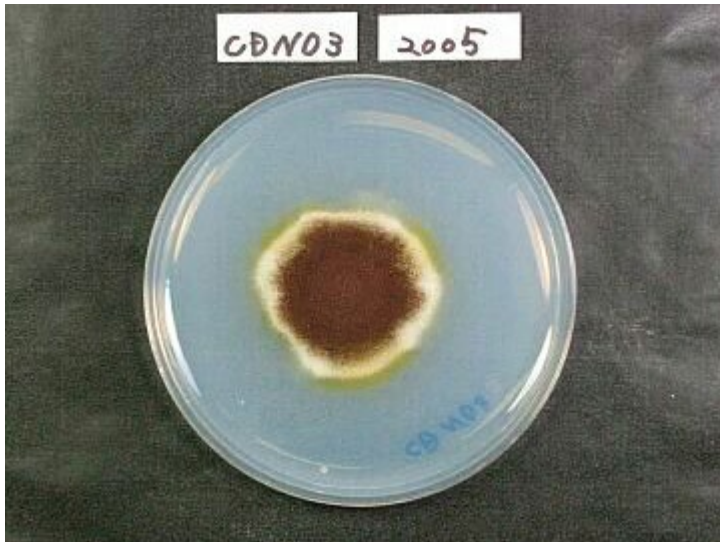
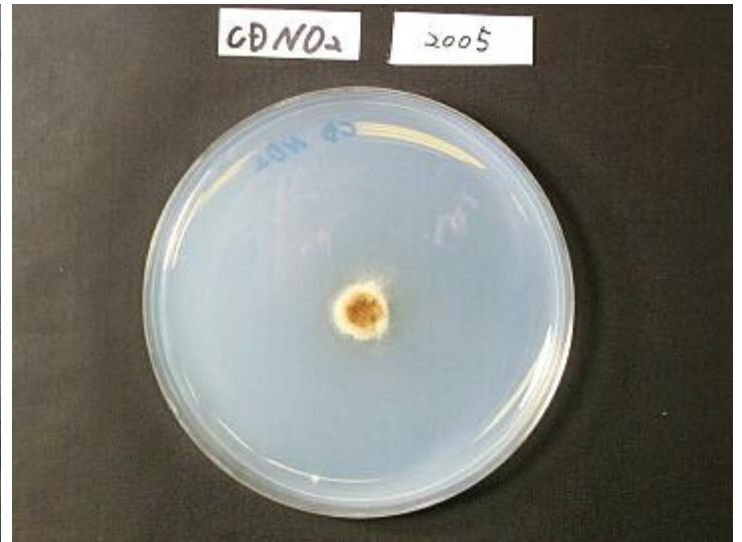


RIB2005

Aspergillus luchuensis



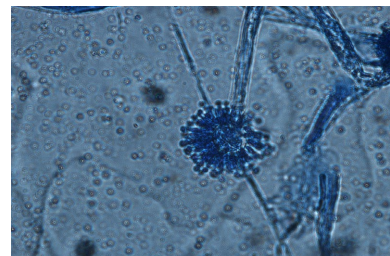
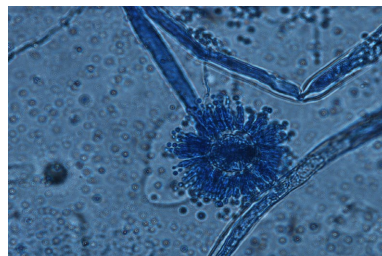
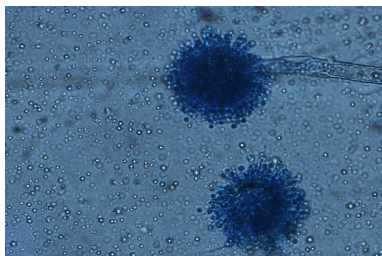
Colony on CD plate



Colony on CD(NO2) plate

Mycological characters

Color of old slant culture	Diameter (mm) of colony at 34 C	Reverse side of Colony		Sclerotia
		Wrinkling	Color	
Roughness of stalk	Length of stalk (mm)	Diameter of vesicles (μ)	Roughness of conidia	Diameter of conidia (μ)
Ratio of biseriata sterigmata (%)	Production			
	Kojic acid	Pigments	Aflatoxins	Amylase
Coloration of hydroquinone	Reduction of methylene blue	Browning of rice koji	Pink color of conida in meidum with	
			Anisic acid	Anisaldehyde
Note	A. usamii, from Kawachi kuro-koji by N. Miyauchi(1966) A. luchuensis (Yamada et. al, JBB, 112, 233 (2011))			



Photographs of conidiophore