

# RIB2051

*Aspergillus luchuensis*



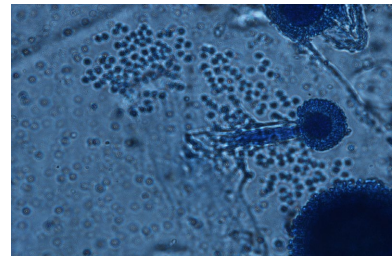
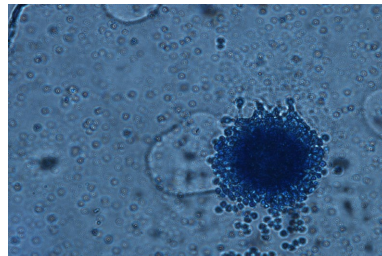
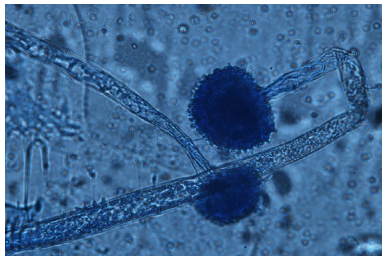
Colony on CD plate



Colony on CD(NO2) plate

## Mycological characters

Color of old slant culture	Diameter (mm) of colony at 34 C	Reverse side of Colony		Sclerotia
		Wrinkling	Color	
Roughness of stalk	Length of stalk (mm)	Diameter of vesicles ( $\mu$ )	Roughness of conidia	Diameter of conidia ( $\mu$ )
Ratio of biseriata sterigmata (%)	Production			
	Kojic acid	Pigments	Aflatoxins	Amylase
Coloration of hydroquinone	Reduction of methylene blue	Browning of rice koji	Pink color of conida in meidium with	
			Anisic acid	Anisaldehyde
Note	NJK2051 <i>A. awamori</i> Nakazawa, IFO 6086 <i>A. cinnamomeus</i> Schieman (1975) <- Higuchi Co., <i>A. niger</i> mut. <i>Cinnamomeus</i> <i>A. luchuensis</i> (Yamada et. al, JBB, 112, 233 (2011))			



Photographs of conidiophore