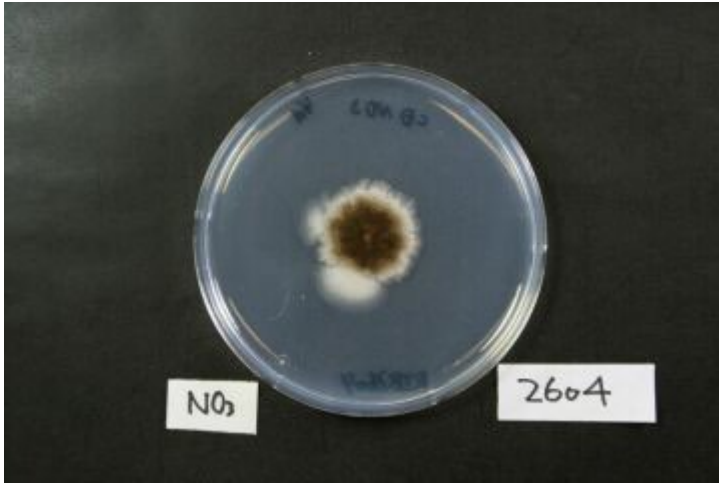
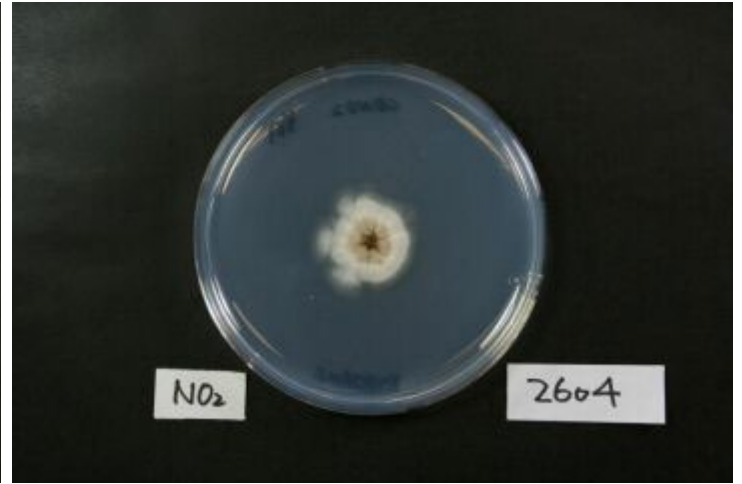


RIB2604

Aspergillus luchuensis



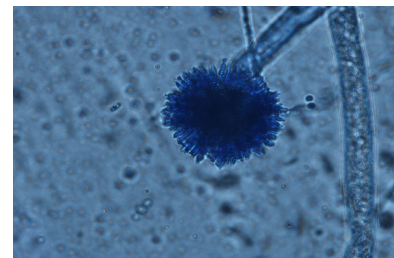
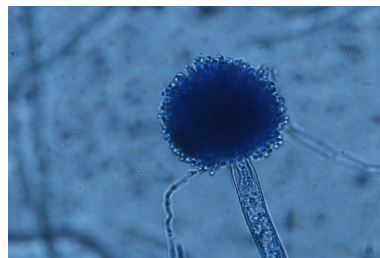
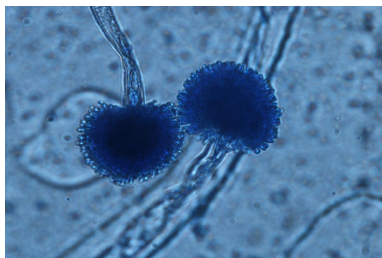
Colony on CD plate



Colony on CD(NO2) plate

Mycological characters

| Color of old slant culture | Diameter (mm) of colony at 34 C | Reverse side of Colony | | Sclerotia |
|-----------------------------------|---|--------------------------|--------------------------------------|-------------------------|
| | | Wrinkling | Color | |
| | | | | |
| Roughness of stalk | Length of stalk (mm) | Diameter of vesicles (μ) | Roughness of conidia | Diameter of conidia (μ) |
| | | | | |
| Ratio of biseriata sterigmata (%) | Production | | | |
| | Kojic acid | Pigments | Aflatoxins | Amylase |
| | | | | |
| Coloration of hydroquinone | Reduction of methylene blue | Browning of rice koji | Pink color of conida in meidium with | |
| | | | Anisic acid | Anisaldehyde |
| | | | | |
| Note | NBRC 4314 <i>A. awamori</i> <- HUT 2105 <- CLMR <- K. Usami <i>A. luchuensis</i> (Yamada et. al, JBB, 112, 233 (2011)) | | | |



Photographs of conidiophore