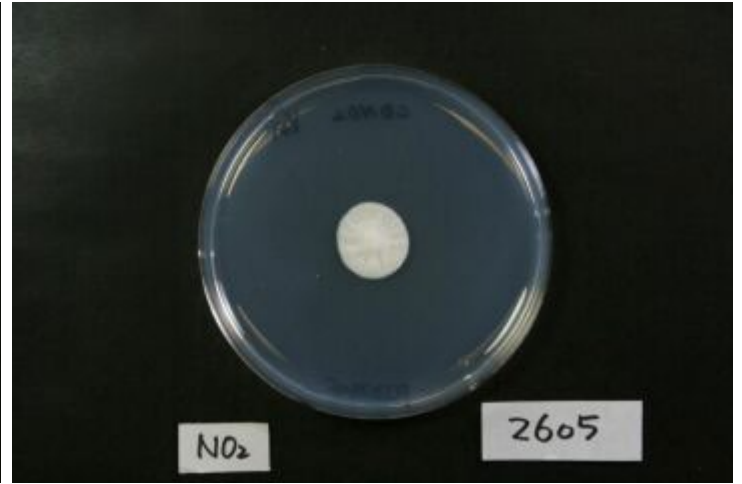


# RIB2605

*Aspergillus luchuensis*



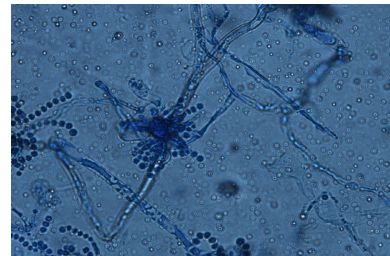
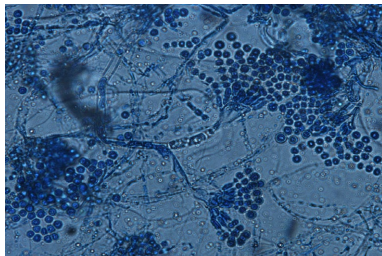
Colony on CD plate



Colony on CD(NO2) plate

## Mycological characters

| Color of old slant culture        | Diameter (mm) of colony at 34 C                                                                   | Reverse side of Colony   |                                     | Sclerotia               |
|-----------------------------------|---------------------------------------------------------------------------------------------------|--------------------------|-------------------------------------|-------------------------|
|                                   |                                                                                                   | Wrinkling                | Color                               |                         |
|                                   |                                                                                                   |                          |                                     |                         |
| Roughness of stalk                | Length of stalk (mm)                                                                              | Diameter of vesicles (μ) | Roughness of conidia                | Diameter of conidia (μ) |
|                                   |                                                                                                   |                          |                                     |                         |
| Ratio of biseriata sterigmata (%) | Production                                                                                        |                          |                                     |                         |
|                                   | Kojic acid                                                                                        | Pigments                 | Aflatoxins                          | Amylase                 |
|                                   |                                                                                                   |                          |                                     |                         |
| Coloration of hydroquinone        | Reduction of methylene blue                                                                       | Browning of rice koji    | Pink color of conida in meidum with |                         |
|                                   |                                                                                                   |                          | Anisic acid                         | Anisaldehyde            |
|                                   |                                                                                                   |                          |                                     |                         |
| Note                              | NBRC 4116 A. awamori <- GRIF (R. Nakazawa)<br>A. luchuensis (Yamada et. al, JBB, 112, 233 (2011)) |                          |                                     |                         |



Photographs of conidiophore