

# RIB2642<sup>T</sup>

EX type of *Aspergillus luchuensis*



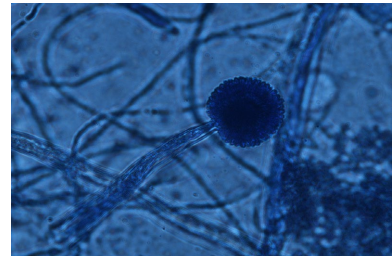
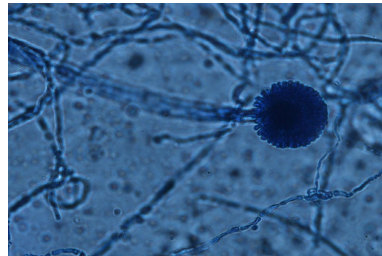
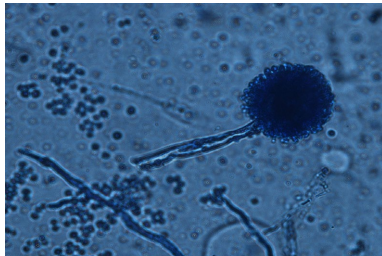
Colony on CD plate



Colony on CD(NO2) plate

## Mycological characters

Color of old slant culture	Diameter (mm) of colony at 34 C	Reverse side of Colony		Sclerotia
		Wrinkling	Color	
Roughness of stalk	Length of stalk (mm)	Diameter of vesicles (μ)	Roughness of conidia	Diameter of conidia (μ)
Ratio of biseriate sterigmata (%)	Production			
	Kojic acid	Pigments	Aflatoxins	Amylase
Coloration of hydroquinone	Reduction of methylene blue	Browning of rice koji	Pink color of conida in meidum with	
			Anisic acid	Anisaldehyde
Note	NBRC4281 <i>A. niger</i> var. <i>intermedius</i> , CBS205.80, IFM47726, <i>A. luchuensis</i> <i>A. luchuensis</i> (Yamada et. al, JBB, 112, 233 (2011)) Hong et al. PLoS ONE, 8, e63769 (2013)			



Photographs of conidiophore