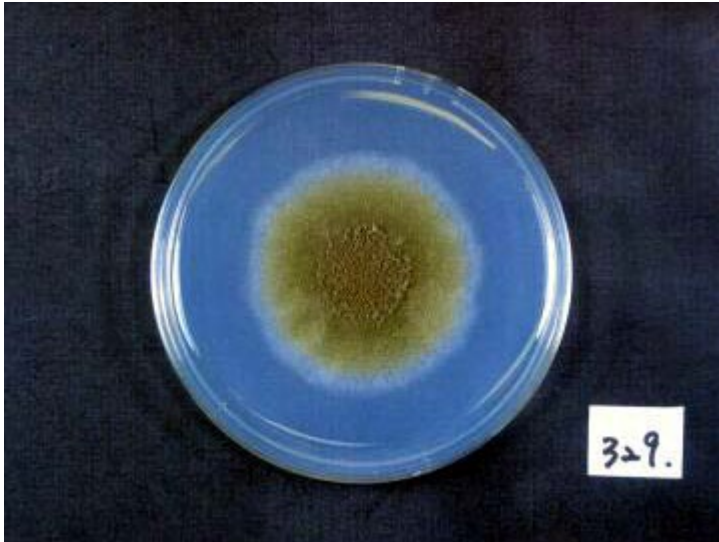
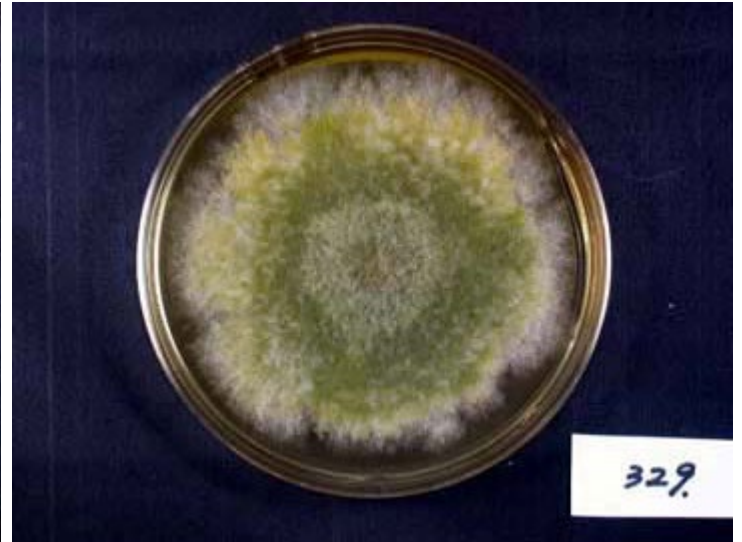


RIB329

A.oryzae var. *brunneus* Murakami



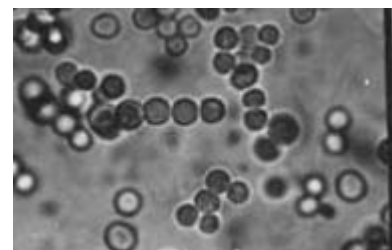
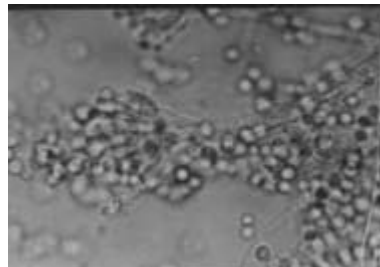
Colony on CD plate



Colony on koji extract plate

Mycological characters

Color of old slant culture	Diameter (mm) of colony at 34 C	Reverse side of Colony		Sclerotia
		Wrinkling	Color	
1	3	2	1	1
Roughness of stalk	Length of stalk (mm)	Diameter of vesicles (μ)	Roughness of conidia	Diameter of conidia (μ)
4	2	1	3	3
Ratio of biseriata sterigmata (%)	Production			
	Kojic acid	Pigments	Aflatoxins	Amylase
1	5	4	1	2
Coloration of hydroquinone	Reduction of methylene blue	Browning of rice koji	Pink color of conida in meidium with	
			Anisic acid	Anisaldehyde
1	2	2	4	1
Note	from shoyu koji, Kuroban(1963) ITS type B, AFHC type A. sojae (Tominaga et. al, AEM, 72, 484 (2006), Kiyota et. al, JBB, 111, 512 (2011))			



Photographs of conidiophore