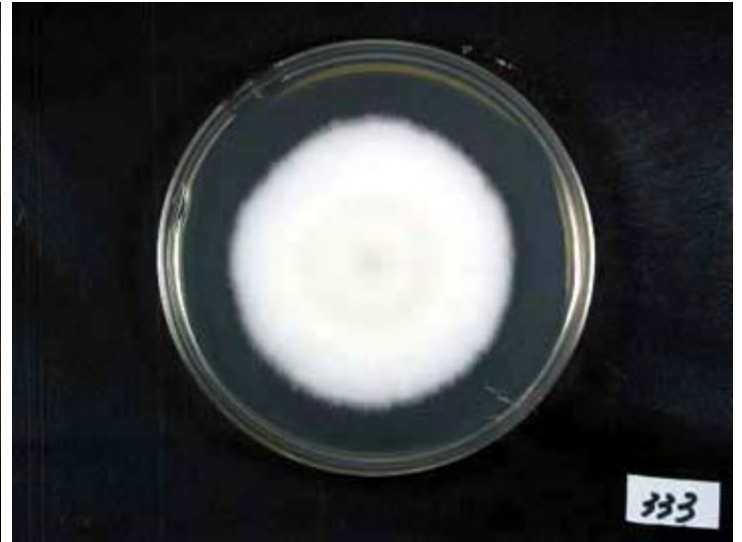


# RIB333

*A.oryzae* var. *brunneus* Murakami



Colony on CD plate



Colony on koji extract plate

## Mycological characters

| Color of old slant culture        | Diameter (mm) of colony at 34 C   | Reverse side of Colony   |                                      | Sclerotia               |
|-----------------------------------|---|--------------------------|--------------------------------------|-------------------------|
|                                   |   | Wrinkling                | Color                                |                         |
| 1                                 | 5   | 3                        | 1                                    | 1                       |
| Roughness of stalk                | Length of stalk (mm)  | Diameter of vesicles (μ) | Roughness of conidia                 | Diameter of conidia (μ) |
| 6                                 | 6   | 5                        | 3                                    | 4                       |
| Ratio of biseriata sterigmata (%) | Production  |                          |                                      |                         |
|                                   | Kojic acid  | Pigments                 | Aflatoxins                           | Amylase                 |
| 1                                 | 5   | 5                        | 1                                    | 3                       |
| Coloration of hydroquinone        | Reduction of methylene blue   | Browning of rice koji    | Pink color of conidia in meidum with |                         |
|                                   |   |                          | Anisic acid                          | Anisaldehyde            |
| 2                                 | 2   | 4                        | 2                                    | 4                       |
| Note                              | from miso koji, Marumasu (1963)<br>ITS type A2a, AFHC type A. oryzae group1 (Tominaga et. al, AEM, 72, 484 (2006), Kiyota et. al, JBB, 111, 512 (2011)) |                          |                                      |                         |