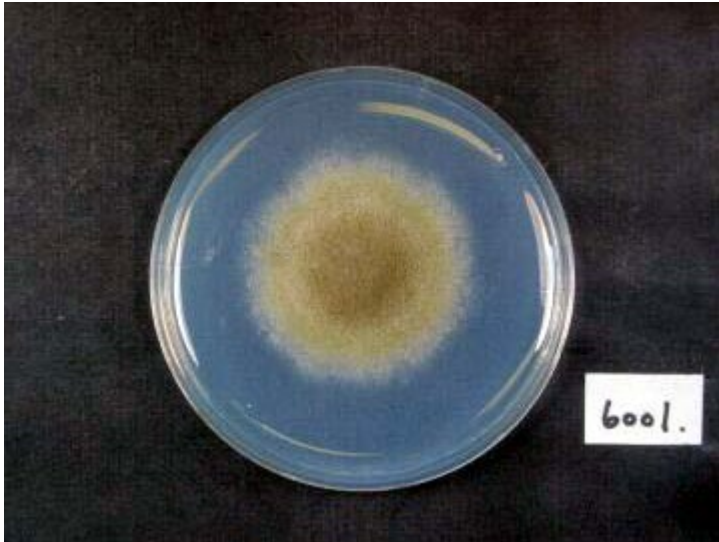


# RIB6001

*Aspergillus sojae*



Colony on CD plate



Colony on koji extract plate

## Mycological characters

Color of old slant culture	Diameter (mm) of colony at 34 C	Reverse side of Colony		Sclerotia
		Wrinkling	Color	
Roughness of stalk	Length of stalk (mm)	Diameter of vesicles ( $\mu$ )	Roughness of conidia	Diameter of conidia ( $\mu$ )
Ratio of biseriata sterigmata (%)	Production			
	Kojic acid	Pigments	Aflatoxins	Amylase
Coloration of hydroquinone	Reduction of methylene blue	Browning of rice koji	Pink color of conidia in medium with	
			Anisic acid	Anisaldehyde
Note	NISL1478A from Noda Institute for Scientific Research, IFO33082, CBS100936 ITS type B, AFHC type A. <i>sojae</i> (Tominaga et. al, AEM, 72, 484 (2006), Kiyota et. al, JBB, 111, 512 (2011))			