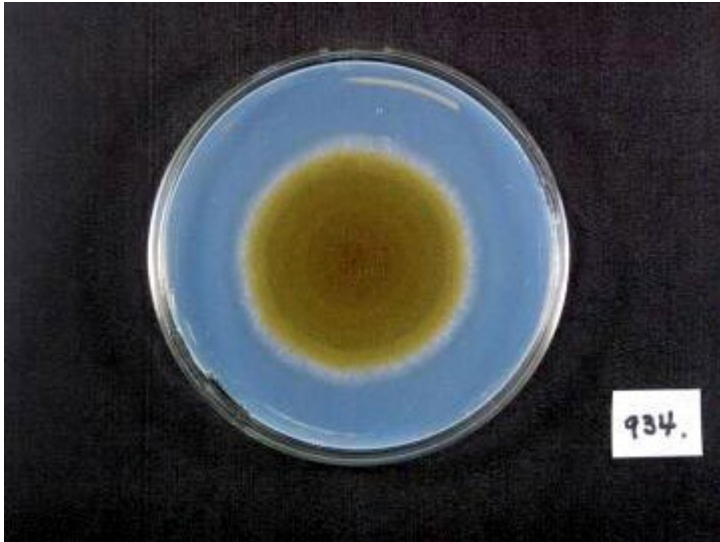
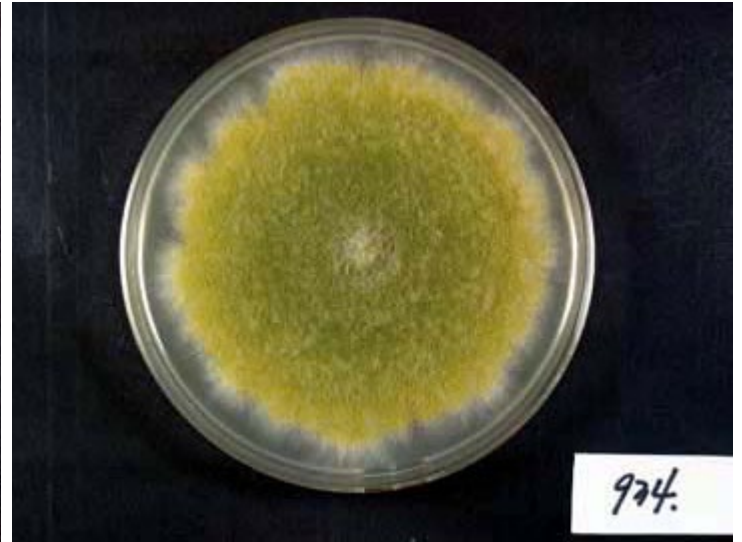


RIB934

A. sojae Sakaguchi et Yamada



Colony on CD plate



Colony on koji extract plate

Mycological characters

| Color of old slant culture | Diameter (mm) of colony at 34 C | Reverse side of Colony | | Sclerotia |
|-----------------------------------|---|--------------------------|-------------------------------------|-------------------------|
| | | Wrinkling | Color | |
| 1 | 5 | 1 | 3 | 1 |
| Roughness of stalk | Length of stalk (mm) | Diameter of vesicles (μ) | Roughness of conidia | Diameter of conidia (μ) |
| 6 | 1 | 3 | 5 | 4 |
| Ratio of biseriata sterigmata (%) | Production | | | |
| | Kojic acid | Pigments | Aflatoxins | Amylase |
| 1 | 6 | 5 | 1 | 1 |
| Coloration of hydroquinone | Reduction of methylene blue | Browning of rice koji | Pink color of conida in meidum with | |
| | | | Anisic acid | Anisaldehyde |
| 6 | 5 | 1 | 3 | 1 |
| Note | from shoyu koji. Shoda shoyu Co, (1969)-K. ITS type B, AFHC type A. <i>sojae</i> (Tominaga et. al, AEM, 72, 484 (2006), Kiyota et. al, JBB, 111, 512 (2011)) | | | |