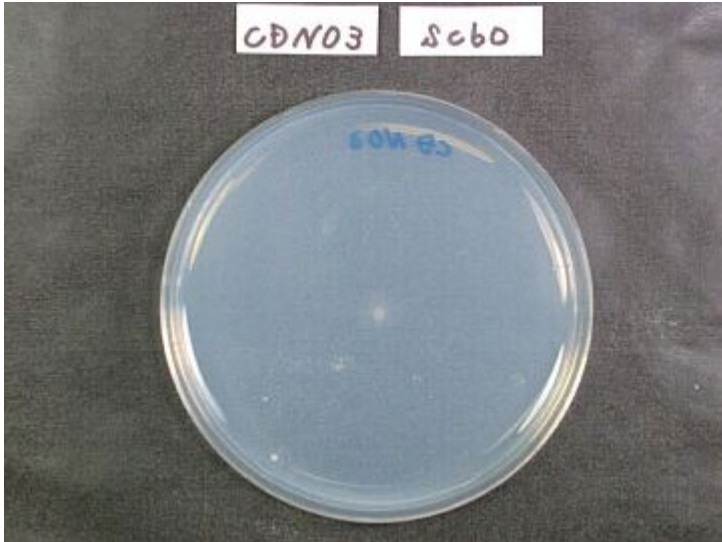


SC60
Aspergillus kawachii



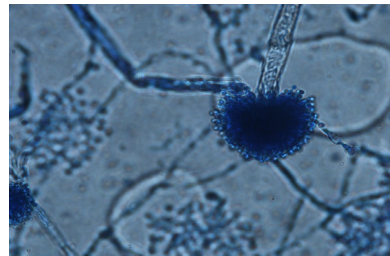
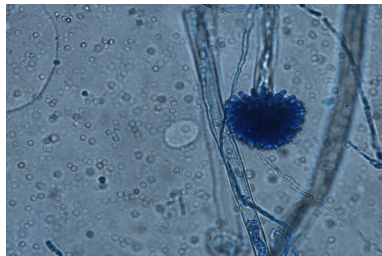
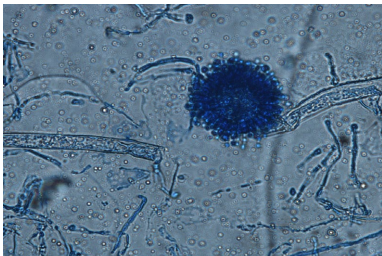
Colony on CD plate



Colony on koji extract plate

Mycological characters

Color of old slant culture	Diameter (mm) of colony at 34 C	Reverse side of Colony		Sclerotia
		Wrinkling	Color	
Roughness of stalk	Length of stalk (mm)	Diameter of vesicles (μ)	Roughness of conidia	Diameter of conidia (μ)
Ratio of biseriata sterigmata (%)	Production			
	Kojic acid	Pigments	Aflatoxins	Amylase
Coloration of hydroquinone	Reduction of methylene blue	Browning of rice koji	Pink color of conida in meidium with	
			Anisic acid	Anisaldehyde
Note	from <i>A. kawachii</i> IFO 4308, Iwasita et. al, Appl., Environ. Microbiol., 65, 5546 (1999) <i>A. luchuensis</i> (Yamada et. al, JBB, 112, 233 (2011))			



Photographs of conidiophore